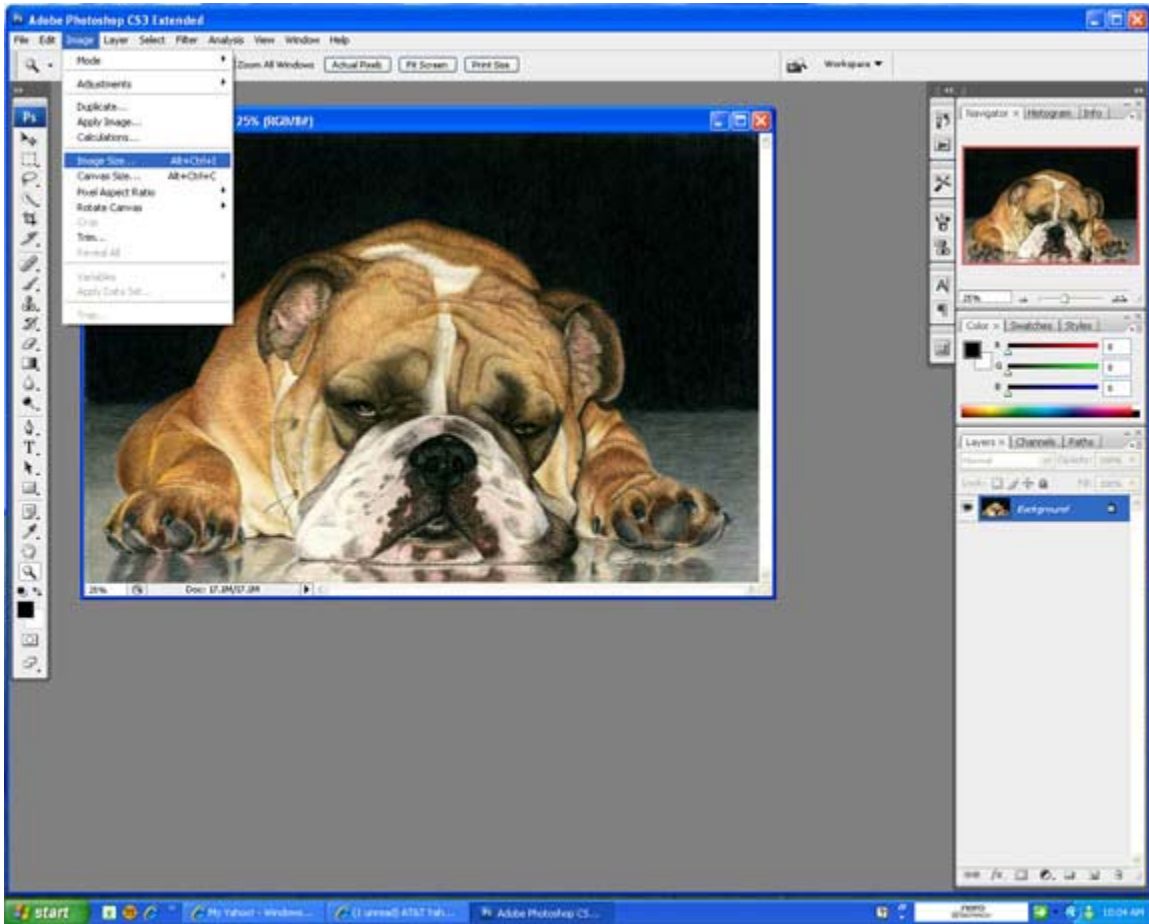


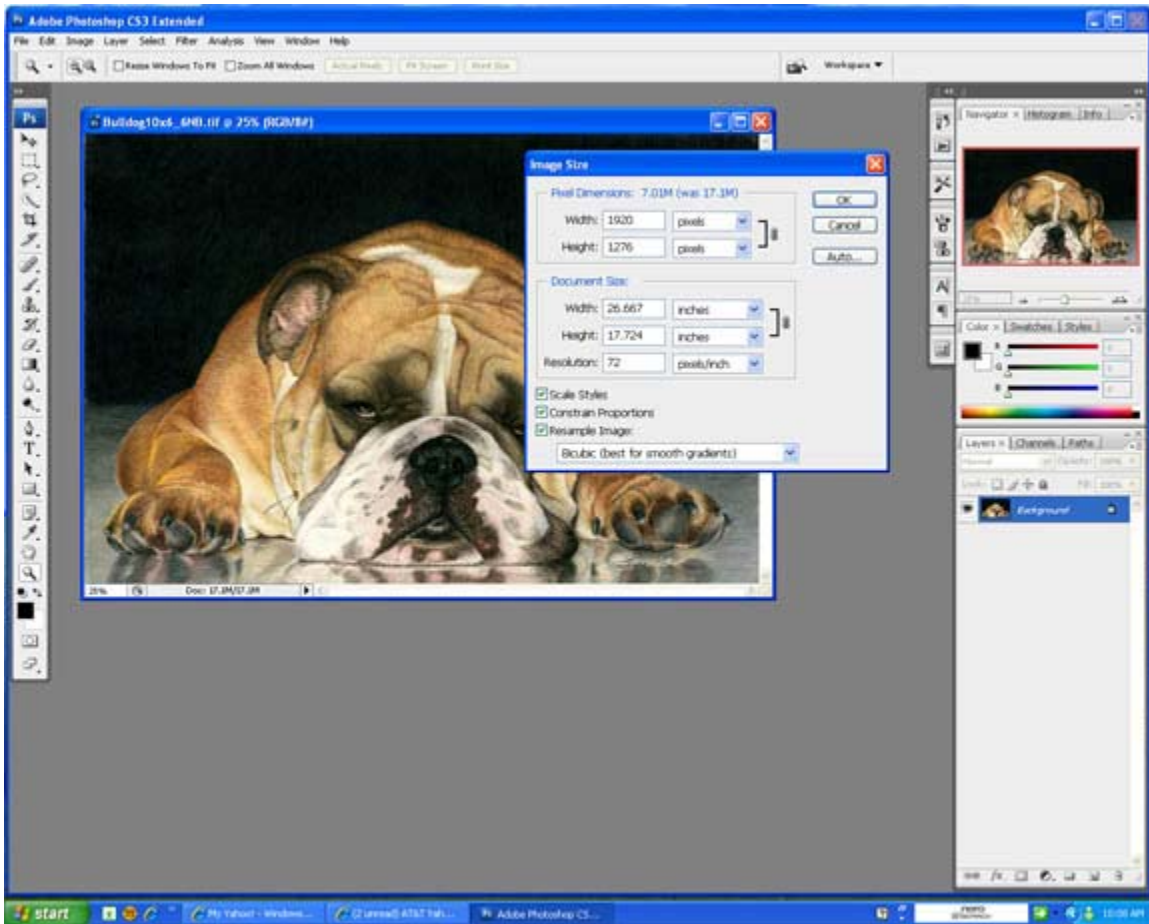
## Prepare Image for Digital Entry Process In PhotoShop

Open your image in Photoshop or any other image editing software. You must resize your image to be no larger than 1920 pixels in any one direction. If your image is rectangular then make the larger edge 1920 pixels.

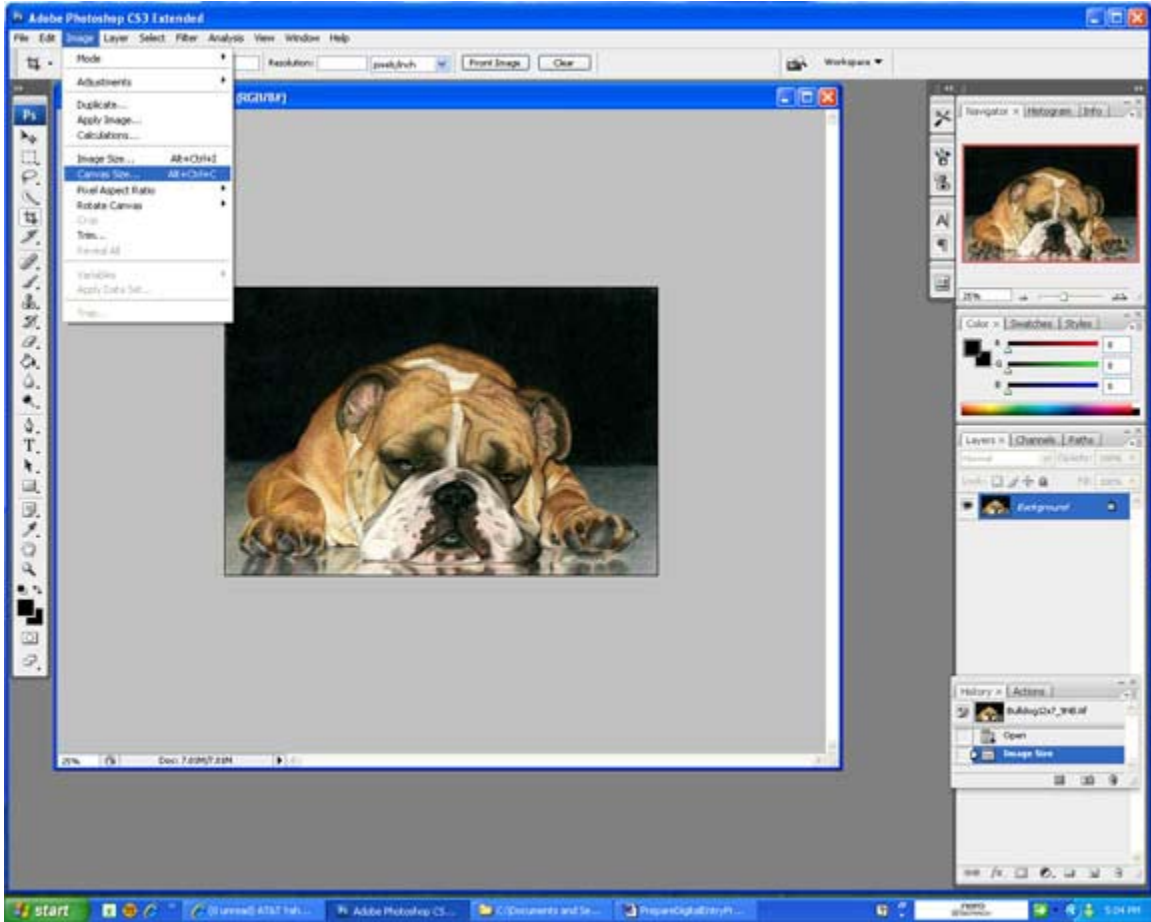
1. To do this go to Image > Image Size:



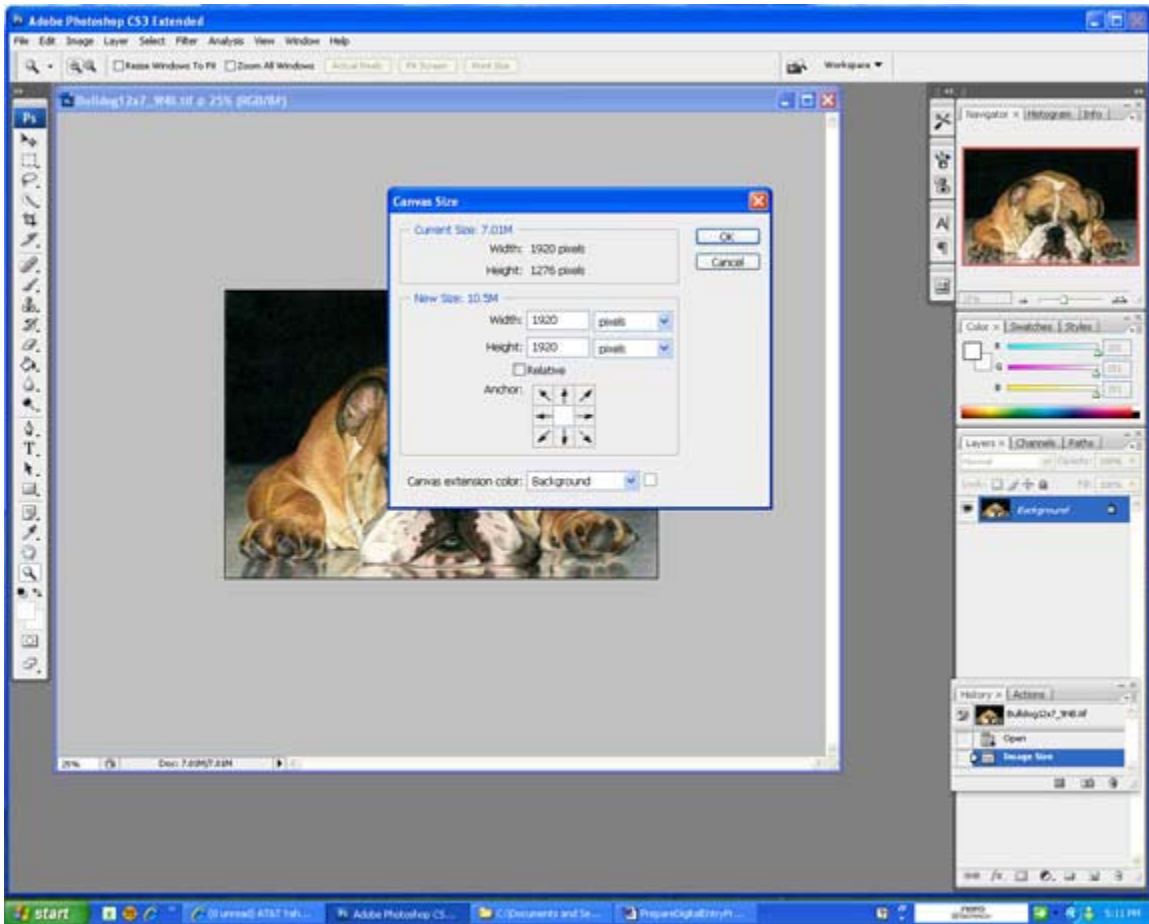
2. After clicking on Image size another window will popup to resize the image. Change the DPI to 72 and the pixels in the largest direction to 1920, then click on OK, see example below:



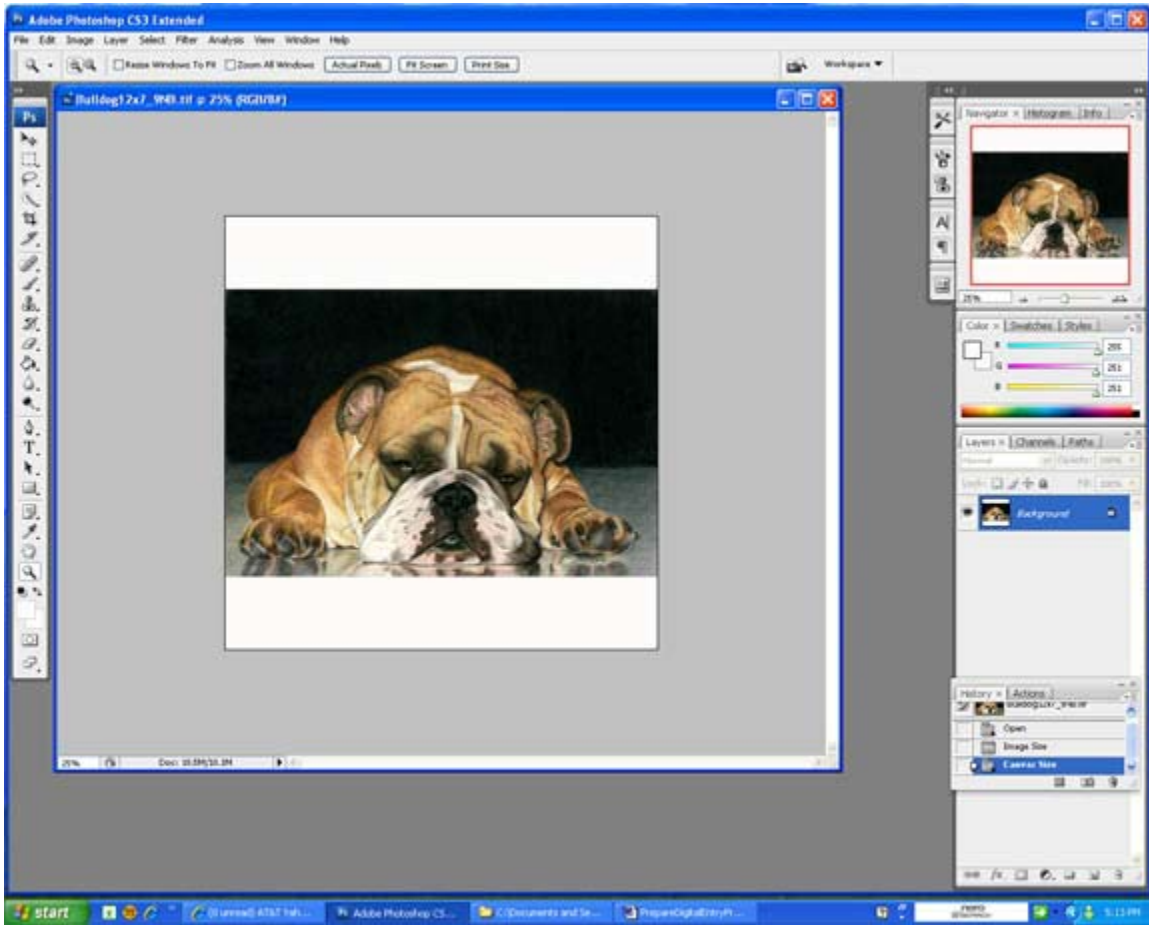
3. Now Click on Image again but this time you will click on Canvas size rather than image size:



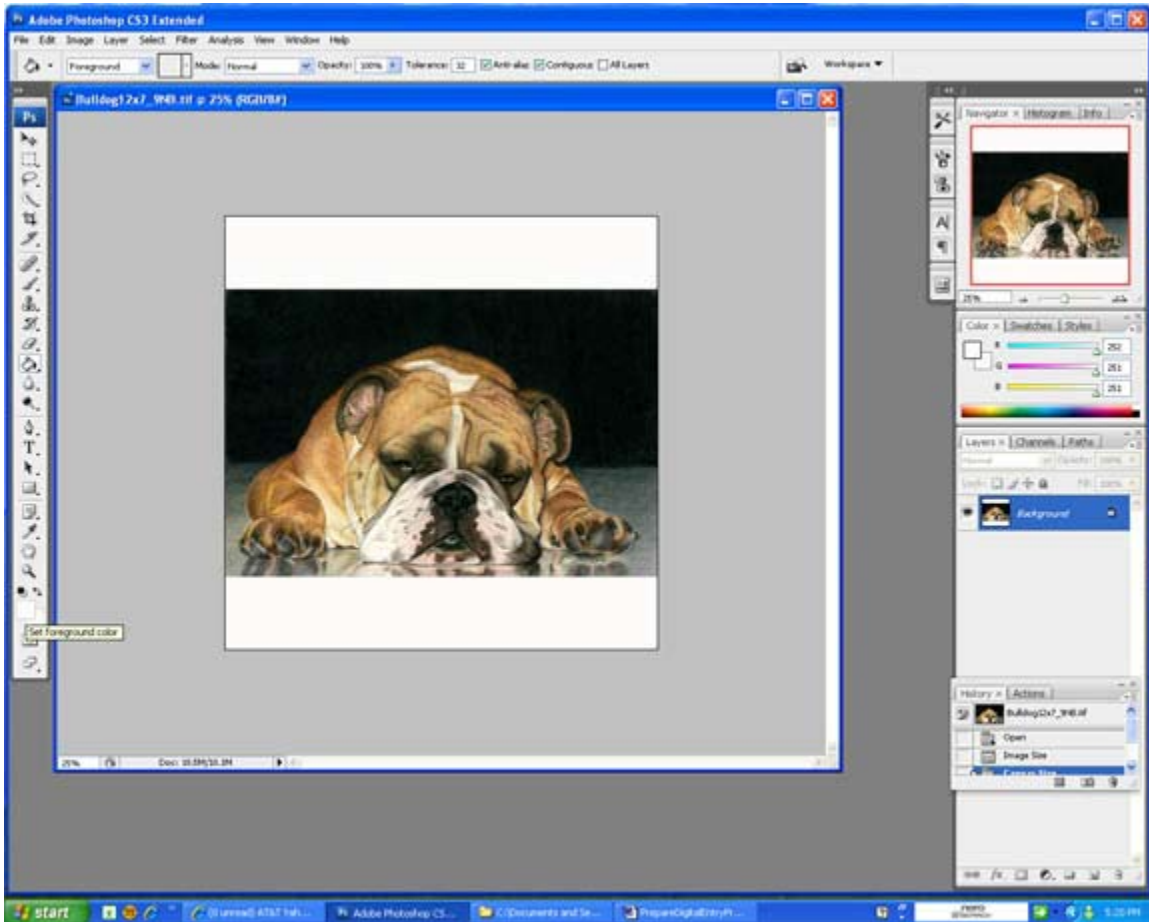
4. When the little window first opens it's set at inches, be sure to change it to pixels by clicking in the boxes that are labeled inches. Change the pixels to 1920 by 1920, then click on OK:



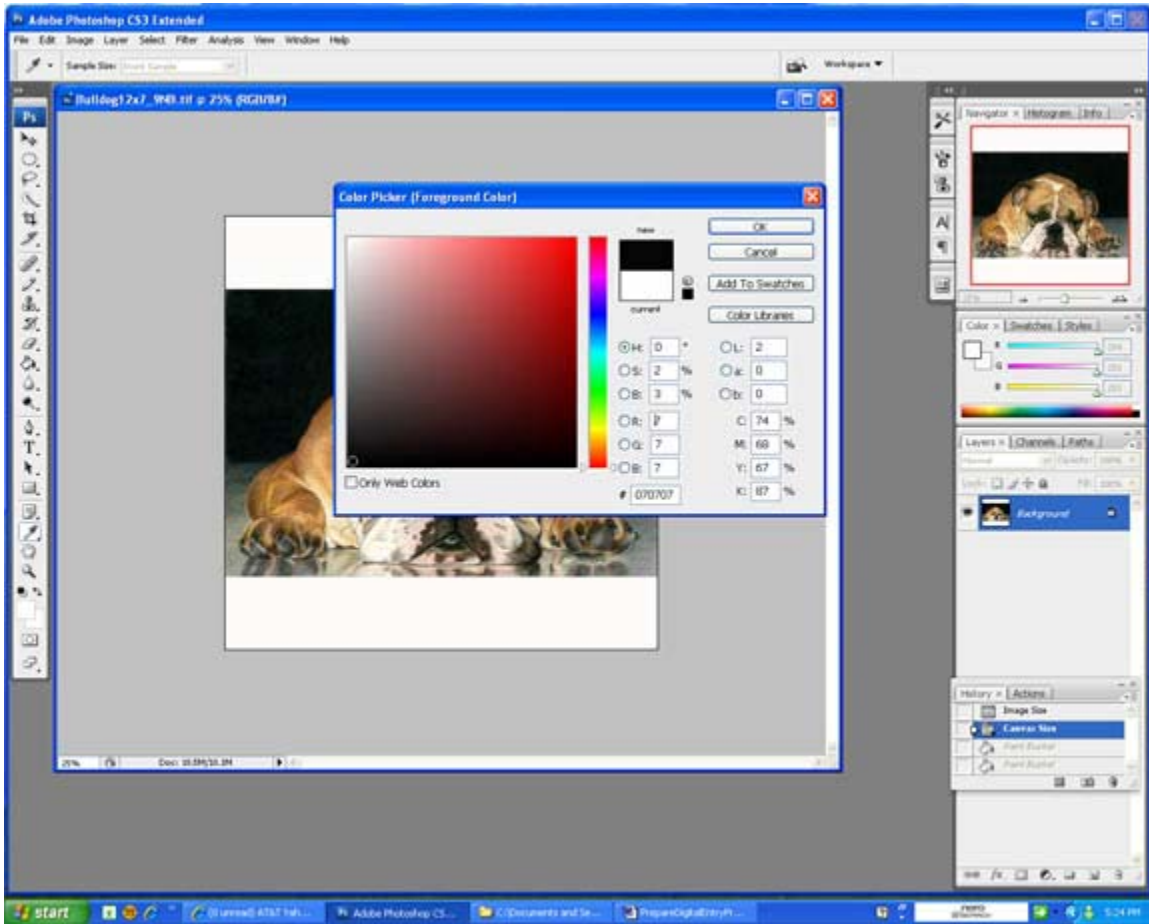
5. Your drawing will now look like the following with white borders:



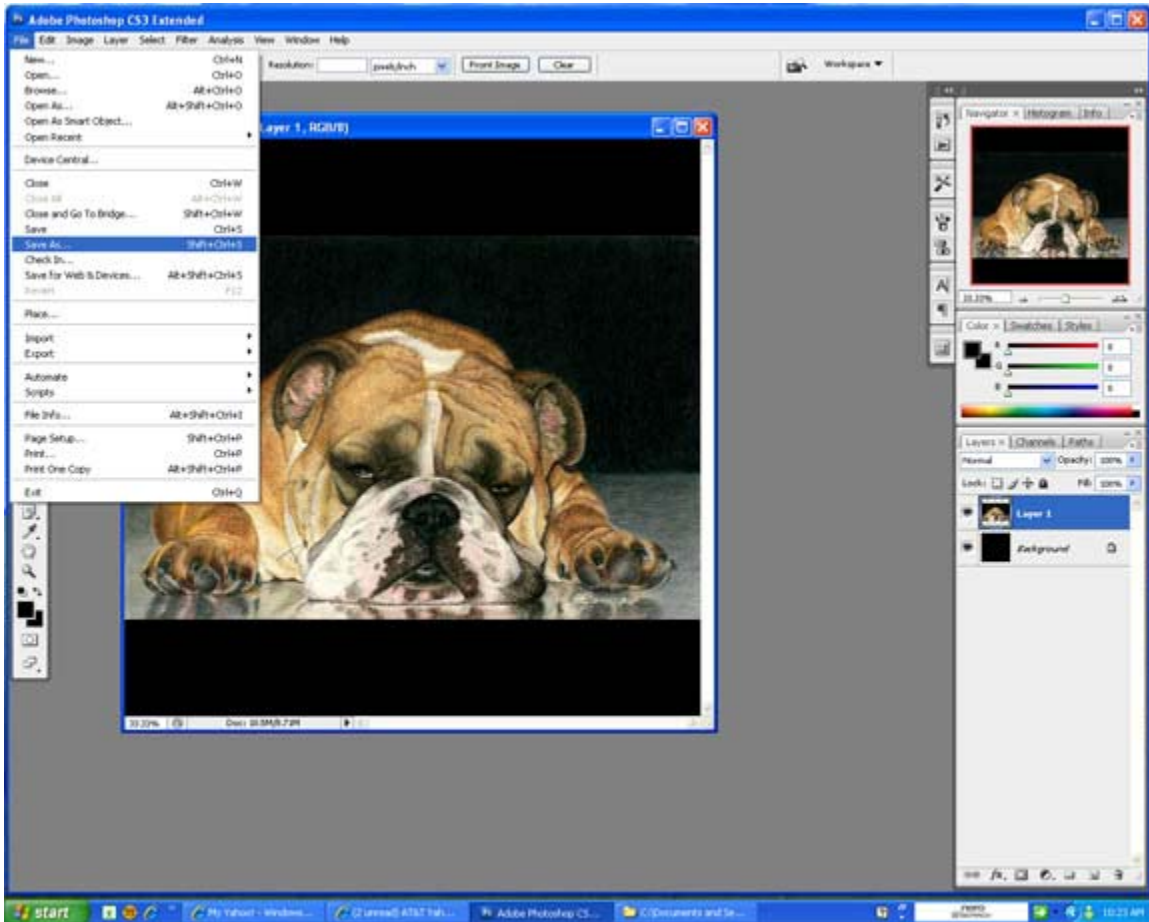
6. Now set the foreground color to black. You can do that by clicking on the top box that the pointer is pointing at in the next example:



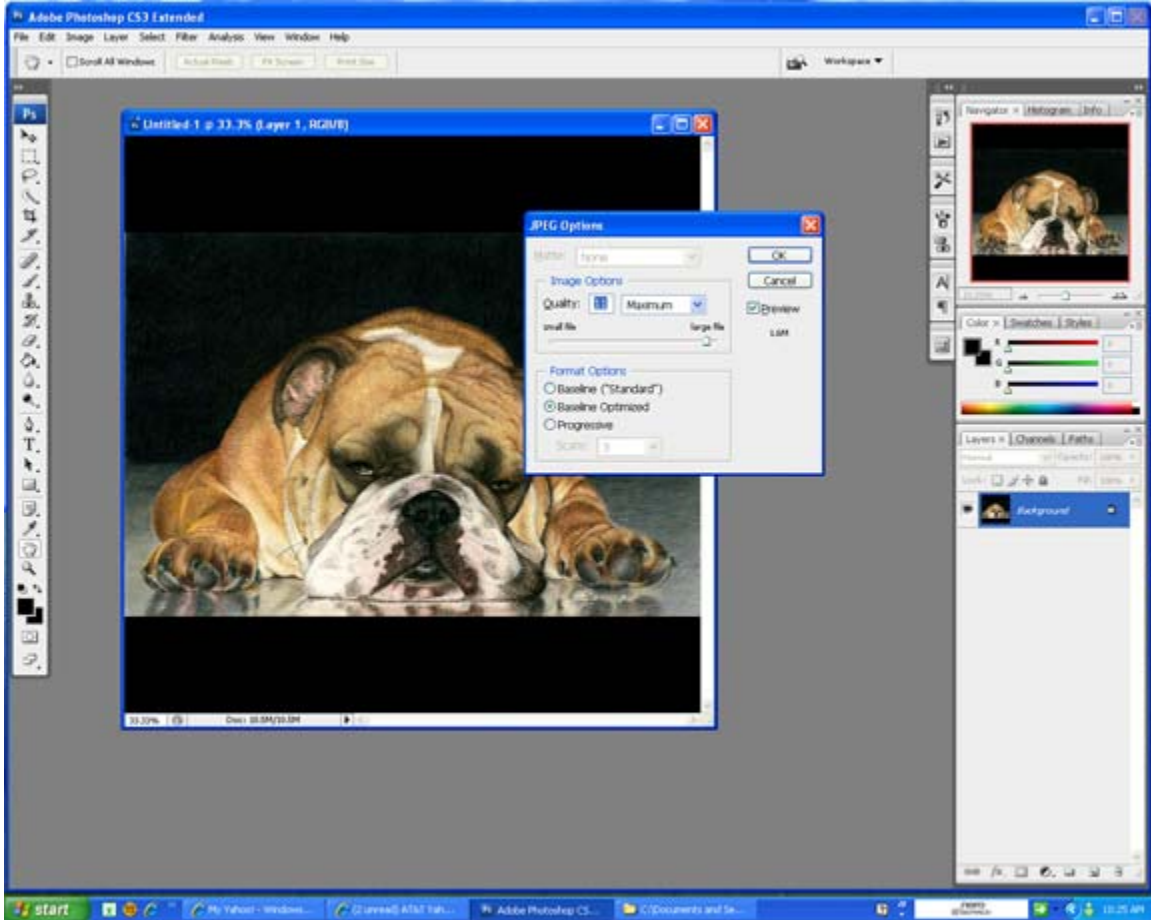
7. A new box will pop up and you should click on the lower left corner where it is black:



8. Find your paint bucket tool and click on each of the white spaces to turn them black. Save the Image as a JPEG file:



9. Another window will pop up. Change the image quality to 11, maximum. This will compress the drawing so it is no larger than 1.8 megs. You may have to play with this depending on your editing software. To see the size of the file look underneath the preview, it gives the size there.



When saving your digital image you should name it the title of the artwork plus 1of1, if there is one entry or 1of2 and 2of2 if there are 2 entries.